

WinTool 2018.2.1 (February 2019)

Version 19.4.1

Client installations / Update Instructions

- Insert the *WinTool* CD and install the desired *WinTool* software modules or select setup.exe to install *WinTool*.
- Install or update the Sentinel copy protection driver. If you use a floating license, the protection installer must be installed on the server.
- When starting up *WinTool* for the first time the software application will be linked to the database (WTData) in the default data directory (Public\Documents\WinTool <Version>).
- Detailed information on configuration and also usage with SQL Server can be found within *WinTool* Help.

Installation in the Network (Update)

- After having successfully installed *WinTool* on all clients, you can re-link them to the "hot database" by using the *WinTool* DB-Manager which is in the *WinTool* installation directory. The DB-Manager will upgrade the old database structure. Thereafter the new database is no longer compatible with earlier *WinTool* versions.
- Then start up *WinTool* and load the latest version of the *WinTool* catalog which can be found within the default data directory. This will upgrade your TechDoc Outlines and the labeling of the user interface.
- If you use modules that require a license code, you need to enter the code using the *WinTool* License Manager (Administration → Configuration → Licenses) into the database.
- WinTool 2018.2 is fully compatible with Databases of **WinTool 2017** (SP1) and **WinTool 2018.1**. No database upgrade is required.

System Requirements

System Software: Windows 7 - 10
Supported MS SQL Server: MS SQL Server / SQL Server Express 2012 – 2017

WinTool presents itself with a new face - simple, smart & powerful!

The new user interface makes operation even easier. Clarity and simplicity, combined with new features, once again show the uniqueness of WinTool as an industry-oriented software solution for shop floor and production. Interactive access to tool data via web shops and clouds - the portal access from WinTool makes it possible. Forged in the fire of industry - the WinTool credo continues!

Functions

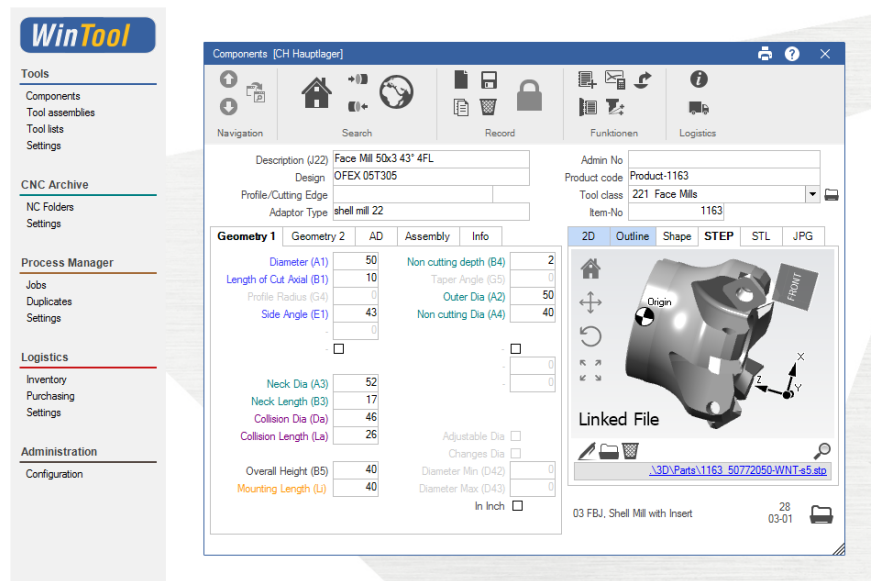
- New powerful user interface
- Optimized arrangement of buttons for intuitive handling
- Unification and simplification of the search functions in the tool library
- Portals to clouds like MachiningCloud, ToolsUnited, APIs and catalogs to and from toolmakers
- 3D visualization of the cutting and collision contours of components and tool assemblies
- Integrated display of STL and / or STEP models at component and tool assembly level incl. Live-Assembling
- Optimized handling of re-sharpening items during booking and ordering processes
- Filtering of NC-Folders according their RC-State
- Over 400 further improvements in the course of redesign and usage optimization
- More than 200 further improvements with WinTool 2018.2

Integration

- WinTool Tool Library
- WinTool CNC Archive
- WinTool Process Manager
- WinTool Logistics Modul

Requirements

- Windows 7 bis 10



The Task

- Operation of WinTool with modern and intuitive design
- API (Application Programming Interface) to tool manufacturers and tool data clouds
- 3D visualization of the cutting edge and collision contours. As well as integrated display and assembling of 3D models

Your Benefit

- You can access tool data from MachiningCloud and Tools-United directly from WinTool, and thus import tool data including 3D models into WinTool with just one click
- The new user interface and the interactive 3D visualization make the operation of WinTool even clearer, easier and safer